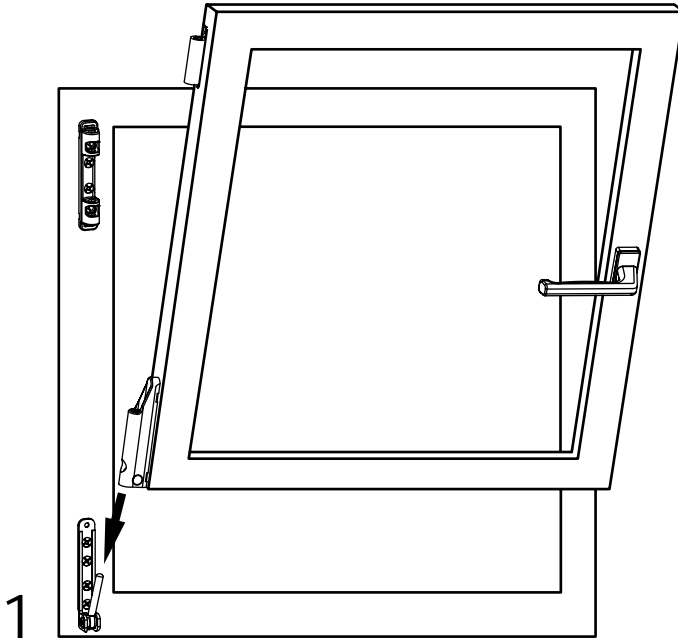
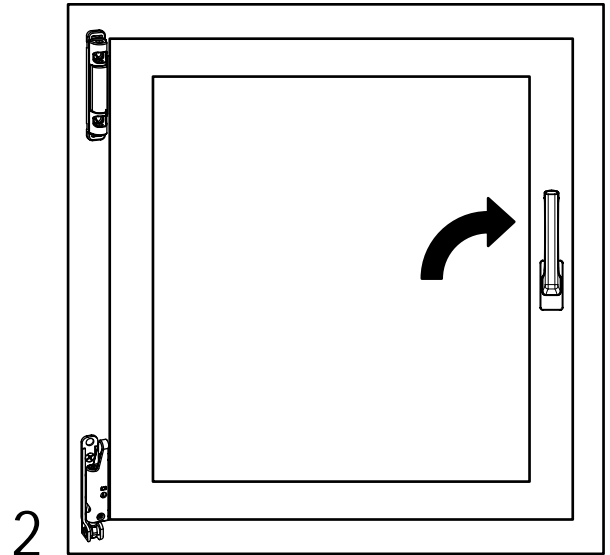


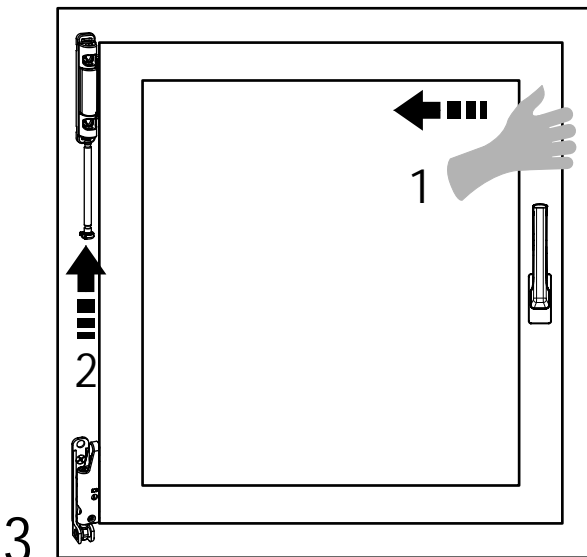
Montagehinweis Sicherungstift UNI-JET
 Mounting instructions for axle of stay arm bearing UNI-JET
 Instruction de montage pour axe de palier de compas UNI-JET



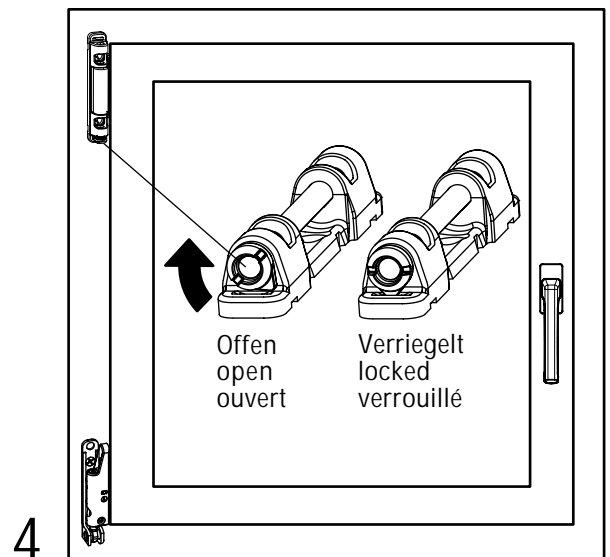
1
 Flügel in Ecklager einhängen
 Hinge sash in corner bearing.
 Accrocher le vantail dans le support d'angle.



2
 Flügel schließen, Drehgriff in Kippstellung
 Close sash, handle in tilt position
 Fermer le vantail, poignée en position à soufflet.



3
 Flügel gegen das Scherenlager drücken
 Scherenstift eindrücken
 Press sash against stay arm bearing,
 insert axle.
 Pousser le vantail contre le palier de compas,
 insérer l'axe.



4
 Achssicherung 45° drehen
 Turn axle locking device by 45°.
 Tourner la sécurité de maintien de 45°.